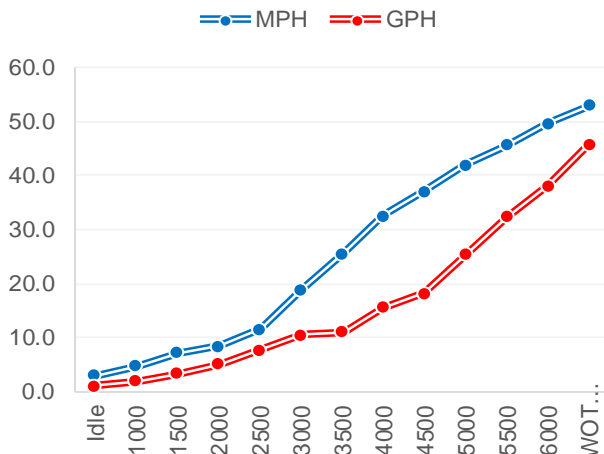




## Performance Data

RPM	MPH	GPH	MPG
Idle	2.90	1.00	2.90
1000	4.70	1.90	2.47
1500	7.10	3.30	2.15
2000	8.40	5.00	1.68
2500	11.60	7.70	1.51
3000	18.90	10.50	1.80
3500	25.50	11.10	2.30
4000	32.50	15.50	2.10
4500	37.00	18.20	2.03
5000	42.00	25.30	1.66
5500	45.60	32.40	1.41
6000	49.6	38.1	1.30
WOT 6250	52.9	45.8	1.16
Accel 0-20 MPH			3.7
Time to Plane		Minimal Bow Rise	



## Boat

Boat Manufacture	Tidewater
Website	www.tidewaterboats.com
Model	280 Center Console
Length	28.4
Beam	9.10"
Dry Weight (lbs)	5800
Max HP	500
Fuel Cap. (gal)	205

## Engine

## Twin

Model	BF250 (X)
Horsepower	250
Displacement	3.6 V6 VTEC
Weight (lbs)	613
Gear Ratio	2
Mounting Hole	#2
Prop Material	Stainless Steel
Diameter / Pitch	15.3/8 X 18 X 3
Honda Part #	58133-ZY3-A18LX 58133-ZY3-B18LX

## Test Conditions

No. of People	2
Fuel Load	100
Air Temperature	80
Test Conditions	Calm
Elevation	S/L
Wind Velocity	1-6 mph
Test Date	1/11/2018

Data presented should be used as a guide. Actual results may vary due to changes in weather, water conditions, elevation and load. Honda reserves the right to change the specifications on this report or it's engines without notice

**TRUE**  
**5**  
**YEAR**  
**LIMITED**  
**WARRANTY**

**The best warranty in the business.**

Only Honda gives you a full, five years, non-declining warranty.

No strings. No catches. It's that simple.



marine.honda.com

© 2018 American Honda Motor Co., Inc